

# HERMITCRAB<sup>®</sup> 2 WITH FLOW MONITORING

The ETwater HermitCrab 2 with Flow Monitoring upgrades conventional controllers to JAIN Unity Internet-based technology. In 10 minutes or less, this simple box converts many brands of conventional controllers by plugging into the remote control port of your controller. It's the fastest path to a JAIN Unity system upgrade for your existing Rain Bird<sup>®</sup>, Rain Master<sup>®</sup>, Superior, Weathermatic<sup>®</sup>, Irritrol<sup>®</sup>, Toro<sup>®</sup> and Hunter<sup>®</sup> controllers.



## HERMITCRAB 2 FEATURES

- Self-adjusting weather-based watering schedules.
- Capacity up to 48 stations.
- Weather-proof, vandal resistant plastic NEMA 4X box and stainless steel hardware for mounting adjacent to existing controller.
- Back lit LCD display for viewing
- HermitCrab 2 operating status and programming selections.
- Two-way wireless communication for downloading ET-based schedules, reporting irrigation and site data, and sending alerts.
- Standard connection for rain sensor.
- Made in the USA.
- Three (3) year limited warranty on the ETwater HermitCrab equipment.
- 4G network provides faster connections.
- Instant control and station watering from any device via Unity Mobile.

## FLOW ATTACHMENT

- HermitCrab 2 with Flow Monitoring measures and records flow and alerts on flow events such as a main line breaks, stuck valves, and broken sprinkler detection.
- Compatible with most available irrigation flow sensors.
- Diagnostic LEDs report on power and flow sensor pulses.

## SAVE MONEY

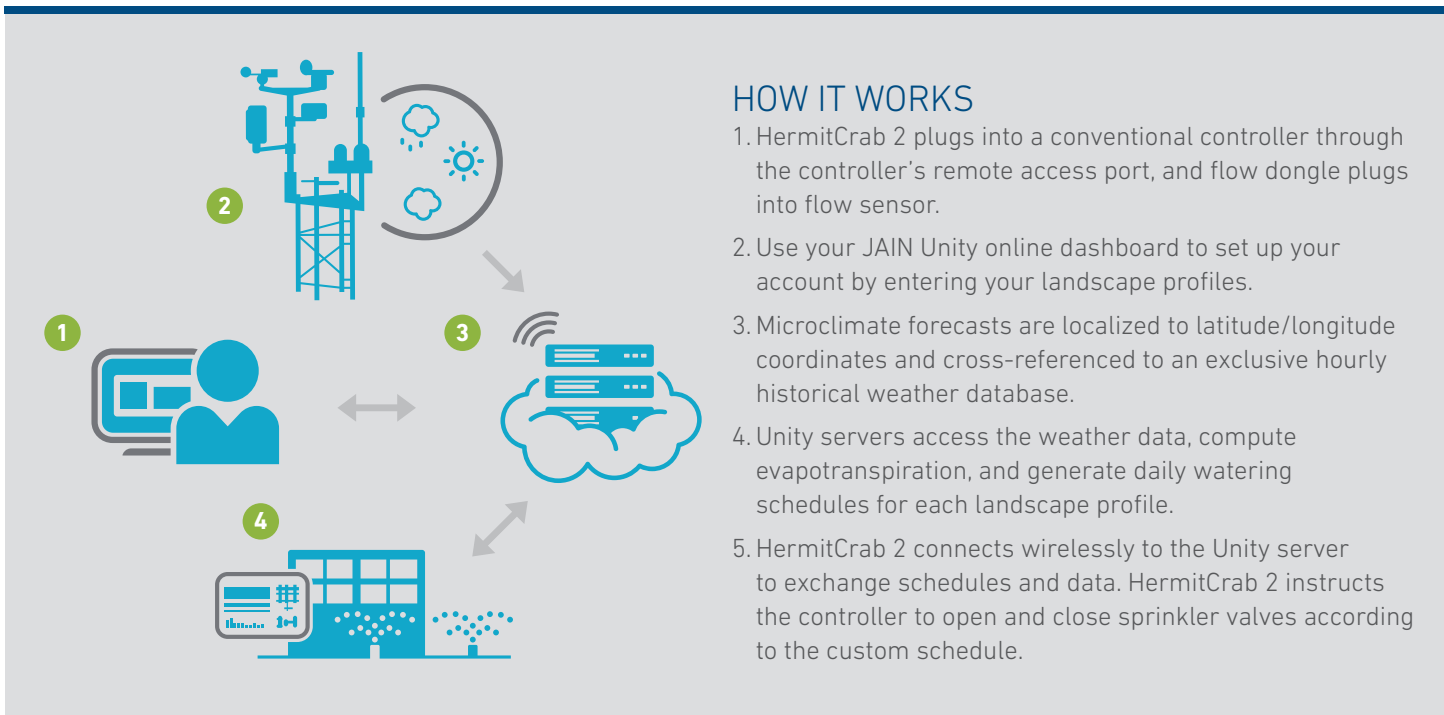
- **Great value:** make your conventional controller “smart” for much less than the cost of a new smart controller.
- **With 20–50% water savings possible,** payback can be just a few months.

## FASTEST INSTALLATION EVER

- **“Plug and Play” installation in under 10 minutes.**
- **Compatible with most major controller brands.**

## SAVE LABOR

- **Remote monitoring + management** via the web.
- **Single-platform simplicity** allows management of multiple controllers of various brands at multiple sites—all with the JAIN Unity web-based system.
- **Includes the most popular labor-saving features of JAIN Unity online dashboard** including water budgeting and rainfall forecast.
- **Flow Monitoring capability,** with full reporting on learned flow rates per controller and per station.



## HARDWARE + ELECTRICAL SPECIFICATIONS

- EPA WaterSense approved.
- Dimensions: 7.9"L x 3.9"W x 2.0"D.
- Weight: 2 lb.
- Input voltage 24 VAC provided by host controller.
- In event of power outage, non-volatile memory retains all programming information indefinitely.
- Accepts 3/4" conduit.
- Requires flow sensor.
- For outdoor use, the flow adapter may need to be enclosed in a separate NEMA box.



## COMPATIBILITY

The ETwater HermitCrab 2 is compatible with most models of the following brands. Host controller must have a remote control port. See your distributor or visit [www.jainsusa.com/etwater](http://www.jainsusa.com/etwater) for details.

- Hunter®
- Rain Master®
- Irritrol®
- Superior™/Sterling
- Rain Bird®
- Weathermatic®
- Toro®

### DISCLAIMER

ET Water Systems, Inc. is neither affiliated with nor endorsed by Hunter Industries, The Rain Bird Corporation, Rain Master Irrigation Systems, Inc., Storm Manufacturing Group, Telsco Industries, or the Toro Company. The warranties of Hunter Industries, The Rain Bird Corporation, Rain Master Irrigation Systems, Inc., Storm Manufacturing Group, Telsco Industries, and the Toro Company do not apply to ETwater HermitCrab products. Rain Bird and Maxicom are trademarks of Rain Bird Corporation.

## HOW TO SPECIFY HERMITCRAB 2 WITH FLOW ADAPTER

**ETW-HC-2-FA** HermitCrab 2 w/flow adapter

**Plus, one of the following required host cables:**

- ETW-HC-H-CO** HermitCrab host cable for Hunter® host controller (uses 3 wire remote connector)
- ETW-HC-T-CO** HermitCrab host cable for Irritrol® or Toro® host controller (uses RJ11 connector)
- ETW-HC-IR6-CO** HermitCrab host cable for Irritrol® or Superior™ host controller (uses 6 pin remote connector)
- ETW-HC-W-CO** HermitCrab host cable for Weathermatic® host controller (uses RJ11 connector)
- ETW-HC-RB5-CO** HermitCrab host cable for Rain Bird® host controller (uses 5 pin remote connector)
- ETW-HC-RB6-CO** HermitCrab host cable for Rain Bird® host controller (uses 5 pin remote connector)
- ETW-HC-RM-CO** HermitCrab with cable for Rain Master® host controller (uses 9 pin D type male remote connector)

© 2020 Jain Irrigation, Inc. All Rights Reserved. ETWATER and UNITY are registered trademarks and SMARTBOX is a trademark of ET Water Systems, Inc. Jain Irrigation and ET Water Systems products and technology are protected by U.S. Pat. Nos. 7596429, 8948921, 9986696, 10028454 and patents pending.